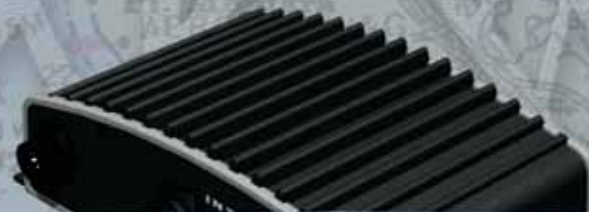


**INTERPHASE**  
*Forward Looking Technology*

2005

[www.interphase-tech.com](http://www.interphase-tech.com)



**CHARTMASTER SERIES**



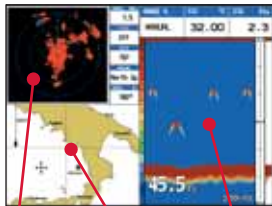


# INTERPHASE COMBO UNITS

## Navigation Above and Below the Water!

In our Chart Master Series, we have applied our forward thinking technology to develop a series of easy-to-use WAAS/GPS Chart Plotters that utilize the latest in highly detailed, seamless MAX cartography from C-Map. Our Chart Master Series are extremely fast and powerful navigation aids — yet in the Interphase tradition, they are very user friendly. Whichever model you choose, the compact size and rugged construction make the Chart Master Series ideal for use on all sail or powerboats — even small center console fishing boats. The Chart Master Series was designed to take the confusion out of chart plotting. On-screen menus and a unique context sensitive interface makes navigating easy. Place the cursor on any waypoint or chart object and the display immediately guides you through your possible choices.

Split screens display Radar and Sonar info on any of the Chart Master screens



Radar Navigational Chart Fishfinder

All Chart Masters feature three selectable color schemes



Daylight



Night



Sunlight



**Black Box Fishfinder For Your Chart Master**  
The new Black Box Fishfinder turns any of Interphase's new Chart Masters into a top of the line fishfinder



**Radar Antenna**

Add either a 2KW or 4KW radar module for ranges up to 36 nautical miles



**C-Map MAX Cartography**

All Interphase Chart Plotters use C-Map MAX Cartography

# Chart Master 11 Series



- Forward-Looking Grounding Alarm
- Fast 200Mhz RISC Processor for super-fast zooms and screen updates.
- Uses C-MAP MAX Cartography
- Includes a WAAS/GPS receiver
- Sea Forecast Capability

The 11 Series Chart Masters bring a new level of performance and an impressive list of advanced features to operators of commercial crafts, yachts and small pleasure boats. The 10.4 inch active matrix color LCD display (VGA resolution) of the Chart Master 11CV+ is daylight viewable and ideal for enclosed cockpits or on open boats with hard top enclosures. The Chart Master 11CVS+ offers all the same features of the 11CV+, with a special full-sunlight viewable color LCD display for the captain who needs excellent visibility in an open cockpit or on the flybridge.



**3D runway Display**  
Displays the next target's bearing (BRG) and the distance to go (DTG)



**Status Screen**  
Shows all satellites being received and their relative signal strength which helps to easily determine if the unit is acquiring satellites



**Full and Split Screen Chart Display**  
Shows position of boat, course and distance to selected waypoints and identifies cursor location; navigate directly to a position by pressing the GO TO key

# Chart Master 169CS



- Wide Display with 16:9 aspect ratio, same ratio as used in Hi-end Digital TV and Computer Monitors
- Fast 200Mhz RISC Processor for super-fast zooms and screen updates
- Uses C-MAP MAX Cartography
- USB interface for future accessories or software upgrades



The 169CS includes a quick-disconnect mount

Interphase's Chart Master 169CS offers cutting-edge navigation features with a gorgeous panoramic color display. The wide, sunlight viewable display gives you the "big picture" while being easy on the eyes and providing truly useable side-by-side split screen displays. The Chart Master 169CS's unique forward-looking alarm can be set to monitor the course ahead for dangerous obstructions or shallow water.



Easy card access

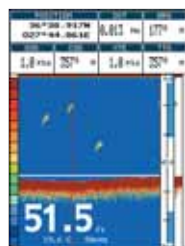
# Chart Master V6/V6i

- Joy-stick cursor
- USB interface for future accessories or software upgrades
- Uses C-Map MAX Cartography
- V6i includes built-in WAAS/GPS Receiver

Interphase's new Chart Master V6 and V6i define the next generation of fast, easy to use sunlight viewable chart plotters. The V6 includes an external 12-Channel WAAS/GPS smart antenna for mounting in remote locations for the best in signal quality. The V6i, with its internal antenna, is a great choice for boaters with open cockpits, center consoles and flying bridges and can serve well as a back up unit on larger vessels.



**Removable Faceplate**  
For secure card storage



**Full Screen Fishfinder**  
Connect the Interphase Black Box Fishfinder and turn your Chart Master V6 or V6i into a fully functional fishfinder

## C-MAP CARTOGRAPHY

New MAX electronic charts raise MAX-compatible chart plotter performance and versatility to a new level for recreational boats. For example, Flashing NavAids lets navigators see lighted buoys flash on the display just as they appear in real time. This C-MAP exclusive lets boaters cross-reference the chart plotter display with what they see out the pilothouse window, for extra confidence when navigating around dangerous marked reefs and points at night or in limited visibility conditions. New Perspective View enhances the chart data to provide a "bird's eye" view of the chart for more situational awareness at the helm. MAX's animated Currents feature uses color-coded arrows or vectors on the chart plotter for a graphic indication of current velocity/direction, including current predictions. Aerial Photographs and Diagrams of select harbors/marinas and Land Elevation Contours on the chart plotter display help boaters relate their immediate surroundings with what they see on the display for safer navigation. Add to this improved Coastal Road Data with facilities information and Points of Interest (POIs), C-MAP's exclusive C-Marina charts and greater coverage areas for less cost, and it's easy to see why boaters worldwide are excited about MAX.

### All the features of NT+... and much, much more:

- New Value-Added data: photos and diagrams of POIs (Points of Interest), C-Marine charts, coastal roads, land elevation and much more!
- Tides and Currents: Fully animated worldwide tides and currents database.
- Dynamic Elevation Data: Land elevation contours (15 levels) Bottom Depth contours (32 levels).
- C-MARINA Port Plans: Featuring marina detail for over 1,000 U.S. marinas in C-MAP's private collection. Now you can see slip detail as well as the locations for onshore facilities.
- Perspective: Displays the chart in a new perspective (3D) mode.
- Dynamic Nav-Aids: Nav-Aids can be animated to show their correct flashing light sequence.



## SPECIFICATIONS

Specifications	Chart Master V6 and V6i	Chart Master 169CS	Chart Master 11CV+ and 11CVS+
Display Type/Size	240 x 320 pixel Sunlight Color Display/5.7" Diagonal, 3.4"W x 4.5"H	480 x 234 pixel Sunlight Color Display/7.0" Diagonal, 6.1" W x 3.4"H	640 x 480 pixel Color Display/10.4" Diagonal 8.3"W x 6.3"H. (CV+ Daylight, CVS+ Sunlight)
Waypoint Storage	500 Waypoints or Marks	1,000 Waypoints or Marks	1,000 Waypoints or Marks
Routes	25 Reversible Routes with 50 Waypoints	25 Reversible Routes with 50 Waypoints	25 Reversible Routes with 50 Waypoints
Case Dimensions	5.7"W x 6.0"H x 2.5"D	9.5"W x 5.9"H x 2.6"D	13.0"W x 8.7"H x 3.5"W
Mounting	Swivel/Gimbal Bracket - EZ Flush Mounting (V6 only)	Quick Disconnect Bracket - EZ Flush Mounting	Gimbal Bracket - EZ Flush Mounting
Antenna-All WAAS 12 Channel	V6: Smart External with 33' cable, V6i: Internal	External Smart Antenna with 33' Cable	External Smart Antenna with 33' Cable
Display Screens (Pages)	Full Screen Chart, GPS Position, Split Chart/Navigation Data, Split Chart/Digital Depth, Split Chart/Depth, 3D Runway Display, GPS Signal Status, Graphic Data, XTE	Full Screen Chart, GPS Position, Split Chart/Navigation Data, Split Chart/Digital Depth, Split Chart/Depth, 3D Runway Display, GPS Signal Status, Graphic Data, XTE	Full Screen Chart, GPS Position, Split Chart/Navigation Data, Split Chart/Digital Depth, Split Chart/Depth, 3D Runway Display, GPS Signal Status, Graphic Data, XTE
Interface Inputs/Outputs	NMEA 0183/0180, USB, Autopilot Interface	NMEA 0183/0180, USB, Autopilot Interface	NMEA 0183/0180, Autopilot Interface, 2 video ports
Power Requirements	7.5 Watts Max, 10-35 Volt DC	7.5 Watts Max, 10-35 Volt DC	18 Watt Max, 10-35 Volt DC

## ACCESSORIES



Connect the optional View Cam or Fish Cam to display live video feeds from above or below the water

## OUTLINES

Chart Master 169CS

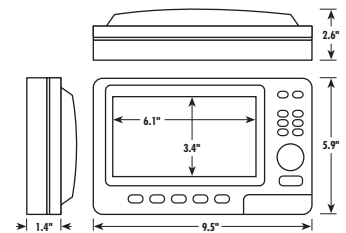


Chart Master 11CV+ and 11CVS+

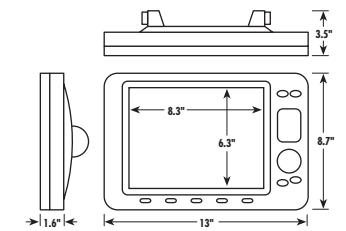
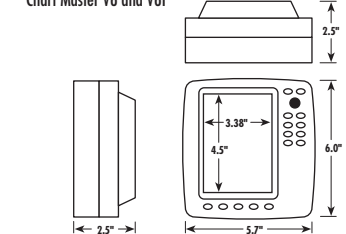
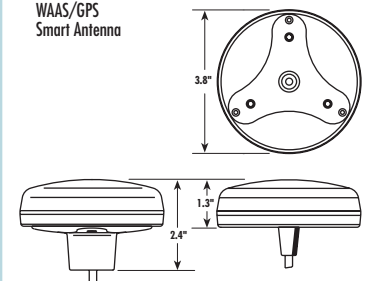


Chart Master V6 and V6i



WAAS/GPS Smart Antenna



### Interphase Technologies, Inc.

2880 Research Park Drive, Suite 140  
 Soquel, CA 95073 USA  
 PHONE 831.477.4944 FAX 831.462.7444  
 EMAIL comments@interphase-tech.com  
 WEB SITE www.interphase-tech.com

**INTERPHASE**  
*Forward Looking Technology*